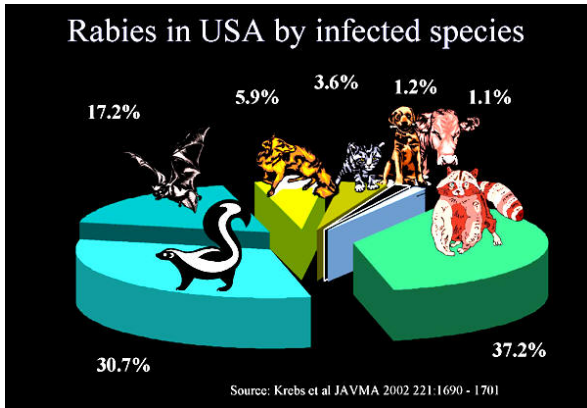


Sampling brains for RABIES



- There are no charges for rabies testing when samples originate from animals in Wyoming. The service is offered FREE by the **Wyoming State Veterinary Laboratory** in the **University of Wyoming** as a service to citizens in the state. It is subsidized by our fee income. Some 800 brains are tested/year by Dr. Mills laboratory from all 23 counties in Wyoming Test results are shared with the **Wyoming Department of Health** and the **Centers for Disease Control and Prevention** so that health professionals have accurate information on the distribution of this fatal disease in Wyoming.
- PLEASE submit only heads or (large animals) an intact brain. Submission of whole skunks will result in a \$25 disposal fee.
- Remove the head from the body by cutting between the skull and the first cervical vertebra (C1). On large animals the brain can be removed and submitted. Please keep in mind that we MUST have a complete cross-section of brainstem and cerebellum to have a valid rabies test. The case will be reported out as "Unsuitable" if the submitted sample does not contain these tissues.
- The specimen should be placed in two levels of containment such as two secured plastic bags (i.e., double bag the specimen; make sure EACH bag is securely closed so that fluid does not leak in transit)
- Place the specimen in an insulated container with plenty of absorbent material to stop any possibility of leakage. Use frozen ice packs (use plenty during hot weather). Do NOT use wet ice.
- Fill out a WSVL **accession form** for each sample, being careful to indicate if there was human exposure and, if so, who that person was. Make sure that we have a daytime phone number or FAX number to report results.
- Specimens are normally tested the day they arrive unless they arrive too late to be processed.
- Emergency testing is available if it is considered a medical emergency, but these arrangements must be made in advance. Please contact the WSVL during daytime hours or the laboratory director (Donal O'Toole at 307 745 3784) out of hours to make these arrangements
- Ship specimen to Wyoming State Veterinary Laboratory, 1174 Snowy Range Rd, Laramie, WY 82070

Drs. Ken Mills (head of rabies section) and Dr. Donal O'Toole (director, WSVL)